

The population of York [Download this section](#)

The population of the United Kingdom is growing. At the time of the 2001 Census it was 58.8 million, increasing to 63.7 million in 2012 (mid year estimate) – an increase of 8.3%.

According to the 2011 Census, York's population was 198,051 persons, made up of 83,552 households. More recent data from [the Office for National Statistics \(ONS\)](#) has estimated York's mid year population in 2012 to be 200,018 – an increase of 1% (1,967 people) since the 2011 Census. This compares to increases of 0.6% in the Yorkshire and Humber region (made up of 24 local authorities) and 0.8% in England and Wales (made up of 348 authorities) over the same period.

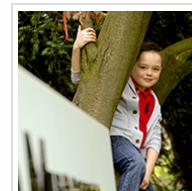
York's population has increased by 10.4% since the 2001 Census and compares to increases of 6.8% regionally and 8.3% nationally over the same time period.

York has a higher percentage of females (51.4%) than regionally or nationally (50.8% for both).

The city has become more culturally and religiously diverse with a Black and Minority Ethnic (BME) population of 9.8% (non White British) compared to 4.9% in 2001.

Some population groups within certain age bands have increased by more than the England and Wales average notably 0-4 year olds, 20-24 year olds and those over 85.

York's population is on the whole healthy (83.9% stated that they are in very good or good health compared to 80% regionally and 81.2% nationally).



In this section

[Population Demography](#)

[Population Health](#)

[Specific Population Profiles](#)

[Vale of York Clinical Commissioning Group Population](#)

[Where Do People Live in York?](#)

This page was last updated on 20 April 2015

This page will be reviewed by 20 April 2016

[Introduction](#)
[Population](#)
[Living in York](#)
[Lifestyles in York](#)
[Health & ill health](#)
[Recommendations](#)

[About](#)
[Updates](#)
[Useful links](#)
[e: healthandwellbeing@york.gov.uk](mailto:healthandwellbeing@york.gov.uk)

[Download PDF](#)



© City of York Council 2017